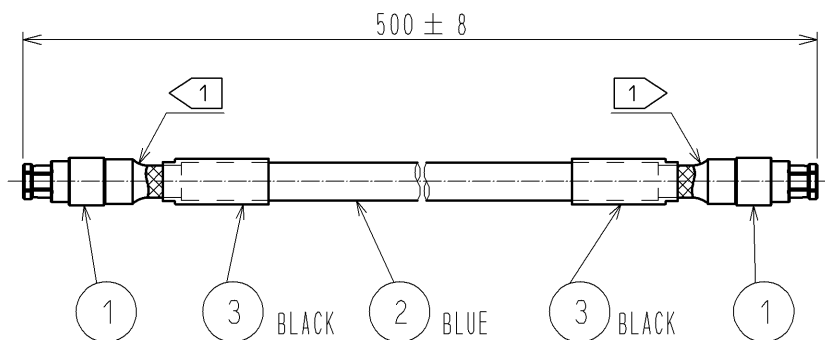


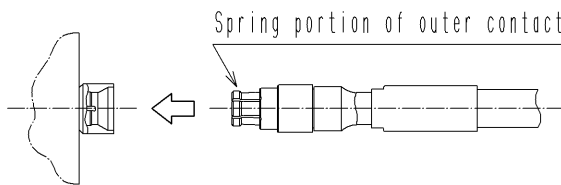
APPLICABLE STANDARD						
RATING	OPERATING TEMPERATURE RANGE	-55°C TO +125°C (95%RH MAX)	STORAGE TEMPERATURE RANGE	-55°C TO + 125°C (95%RH MAX)		
	POWER	—W	CHARACTERISTIC IMPEDANCE	50Ω (0 TO 65 GHz)		
	PECULIARITY	—	APPLICABLE CABLE	FCCAF1 NISSEI ELECTRIC CO., LTD.		
<b>SPECIFICATIONS</b>						
ITEM	TEST METHOD	REQUIREMENTS	QT	AT		
<b>CONSTRUCTION</b>						
GENERAL EXAMINATION	VISUALLY AND BY MEASURING INSTRUMENT.	ACCORDING TO DRAWING.	X	X		
MARKING	CONFIRMED VISUALLY.		—	—		
<b>ELECTRIC CHARACTERISTICS</b>						
CONTACT RESISTANCE	100 mA MAX (DC OR 1000 Hz).	CENTER CONTACT	157 mΩ MAX.	X	X	
		OUTER CONTACT	52 mΩ MAX.	X	X	
INSULATION RESISTANCE	250 V DC.		500 MΩ MIN.	X	X	
VOLTAGE PROOF	250 V AC. FOR 1 min. CURRENT LEAKAGE 2mA MAX.	NO FLASHOVER OR BREAKDOWN.			X	
RETURN LOSS	FREQUENCY 0.04 TO 65 GHz	RETURN LOSS 15dB MIN : 0.04~20 GHz			X	—
		RETURN LOSS 10dB MIN : 20~40 GHz				
		RETURN LOSS 5dB MIN : 40~65 GHz				
INSERTION LOSS	FREQUENCY TO GHz	dB MAX.			—	—
<b>MECHANICAL CHARACTERISTICS</b>						
CABLE CLAMP ROBUSTNESS (AGAINST CABLE PULL)	APPLYING A PULL FORCE THE CABLE AXIALLY AT 40 N MAX.	1) NO WITHDRAWAL AND BREAKAGE OF CABLE. 2) NO BREAKAGE OF CLAMP.			X	—
<p>MEASUREMENT CIRCUIT DIAGRAM OF RETURN LOSS</p> <p>The diagram shows two boxes labeled 'PORT V(F)' connected to a central 'HARNESS' box. The harness is flanked by two 'SMPMP(FD)-HVP' connector boxes. A double-headed arrow below the harness is labeled 'D.U.T.'.</p>						
COUNT	DESCRIPTION OF REVISIONS	DESIGNED	CHECKED	DATE		
△						
REMARK			APPROVED	KY. SHIMIZU	14. 11. 20	
RoHS COMPLIANT			CHECKED	TO. KATAYAMA	14. 11. 20	
Unless otherwise specified, refer to JIS C 5402.			DESIGNED	YI. FUNADA	14. 11. 19	
			DRAWN	YI. FUNADA	14. 11. 19	
Note QT:Qualification Test AT:Assurance Test X:Applicable Test		DRAWING NO.	ELC4-361603-02			
<b>HRS</b>	SPECIFICATION SHEET	PART NO.	SMPM-2J-FCCAF1-A-500RS			
	HIROSE ELECTRIC CO., LTD.	CODE NO.	CL321-6611-2-02	△	1/1	



NOTE ① Semi-flexible coaxial cable is used in the assembly product, and the junction of the cable and the connector is soldered. If excess stress was applied to the junction, the stress might give damage like the crack of shield part to the product. Please be careful of handling.

【 RECAUTION FOR HANDLING 】

Extraction and insertion of a SMPM connector. Please extract and insert the connector straightly by aligning the mating axes of both connectors. If the connector was extracted or deterioration of the spring portion of outer contact.



RoHS COMPLIANT

1 SMPM-J-FCCA1			CL338-0501-3-00		3 HEAT SHRINK TUBING	SUMITOMO ELECTRIC INDUSTRIES, LTD.
NO. PART NO.			CODE NO.		2 FCCAF1	NISSEI ELECTRIC CO., LTD.
UNITS mm			SCALE FREE	COUNT	DESCRIPTION OF REVISIONS	DESIGNED
HIROSE ELECTRIC CO., LTD.			APPROVED : KY. SHIMIZU	14. 11. 20	DRAWING NO.	EDC4-361603-02
			CHECKED : TO. KATAYAMA	14. 11. 20	PART NO.	SMPM-2J-FCCAF1-A-500RS
			DESIGNED : YI. FUNADA	14. 11. 19	CODE NO.	CL321-6611-2-02
			DRAWN : YI. FUNADA	14. 11. 19		1/1